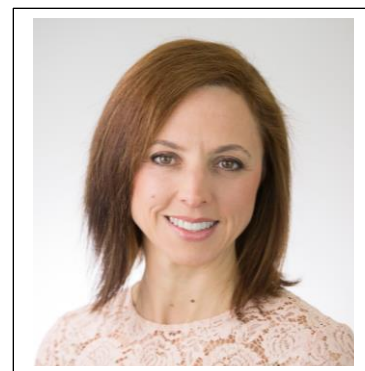


GP/LACTATION CONSULTATION

Dr Anita Bearzatto MBBS (hons), FRACGP, IBCLC
(General Practitioner, Lactation Consultant)



Dear Patient

You have been booked in to see me for a lactation consultation.

As a GP and lactation consultant I provide a comprehensive assessment of both you(mother) and your baby which includes taking a detailed history, performing an examination and observing a breastfeed.

- Initial consultation: 45mins
- Review consultation: 30mins

For those babies referred for assessment of tongue tie, an assessment of the breastfeeding mother and the breastfeed is usually also performed, as this helps determine whether further management of the tongue tie is required. If the tongue tie release procedure is required, this can be performed on the same day. There is no extra charge if the procedure is performed.

A private fee will be charged for today's consultation. In most cases you(mother) and your baby will be charged a fee. Total costs including your out of pocket cost (i.e. cost to you after receiving your Medicare rebate) are as follows:

For weekday consultations :	1 st Visit	\$180.00 payment on the day out of pocket \$107.20 (after Medicare rebate)
	Review Visit	\$150.00 payment on the day Out of pocket \$77.20 (after Medicare rebate)
For Saturday consultations :		\$185.00 payment on the day Out of pocket \$112.20 (after Medicare rebate)

Please note on occasions (eg prolonged consultations) the total fee may differ but the out of pocket cost will remain the same.

Please contact Reception staff if you have any further queries about the consultation or the fees.

I look forward to assisting you with your lactation concerns.

Kind regards
Dr Anita Bearzatto